



Comhairle Chontae na Gaillimhe
Galway County Council

Temporary Closure of Roads

Roads Act 1993 – Section 75 Roads Regulations 1994 – Article 12

Notice of Decision

Athenry-Oranmore Municipal District

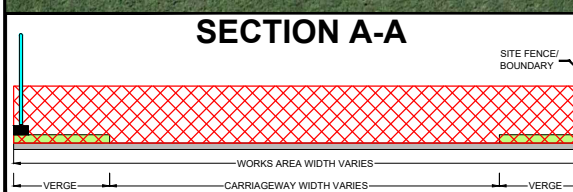
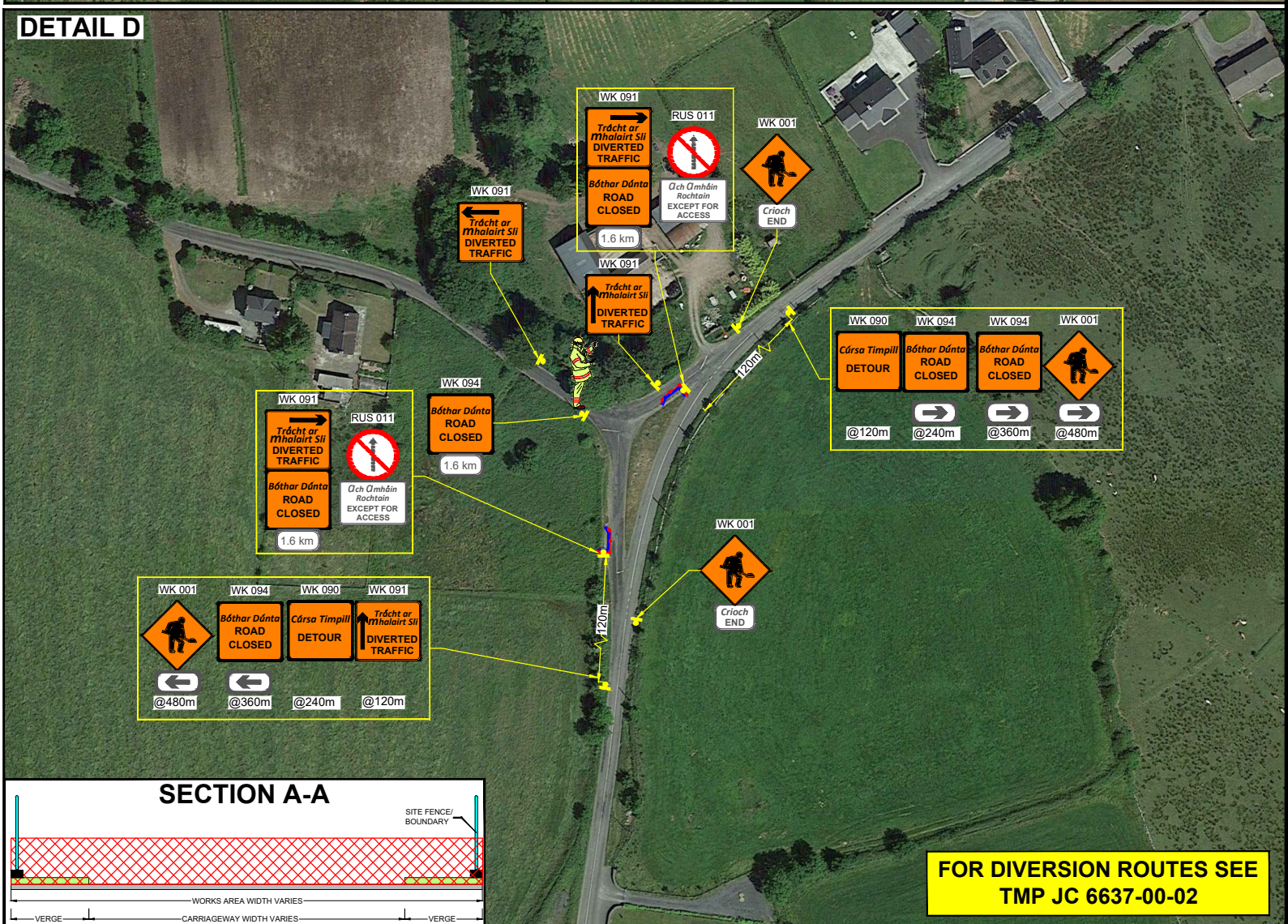
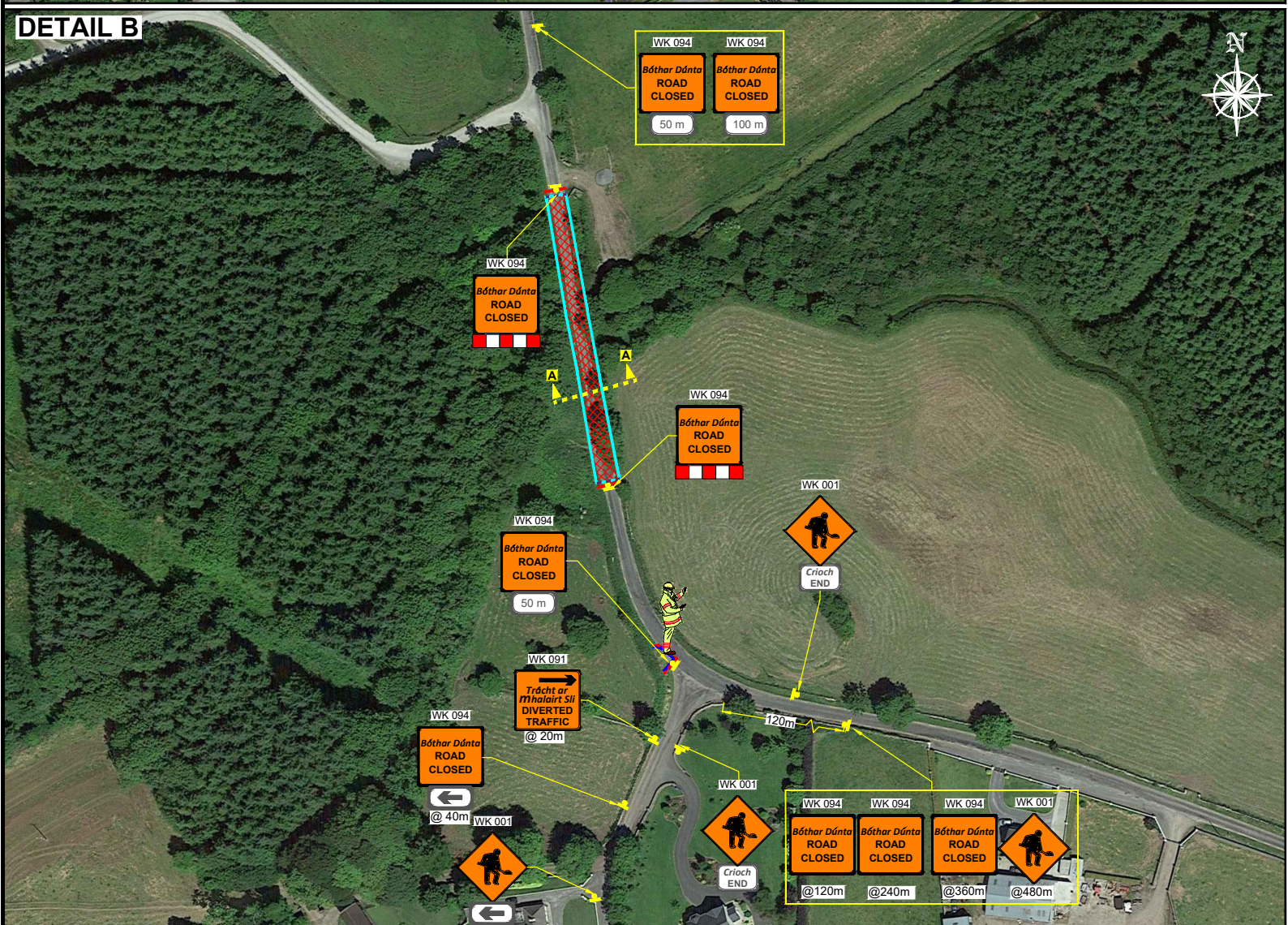
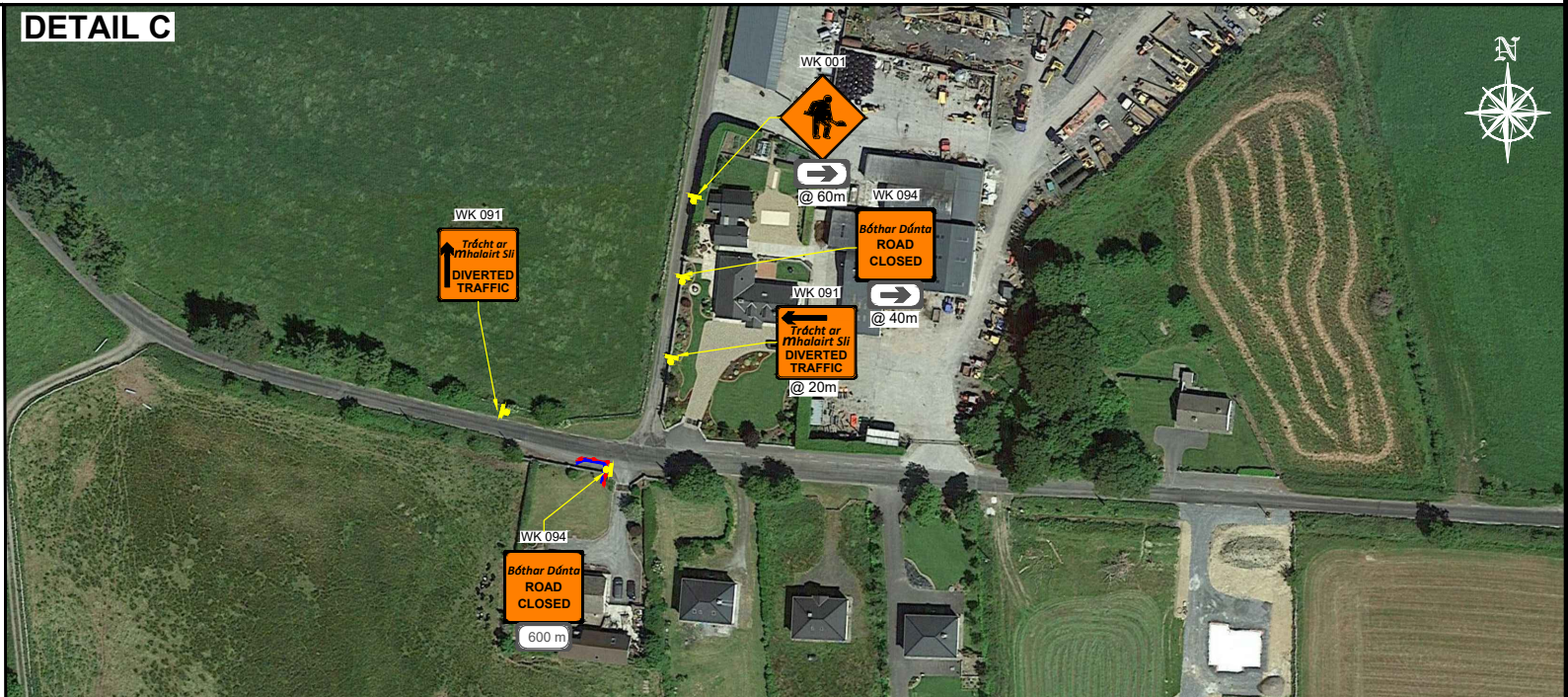
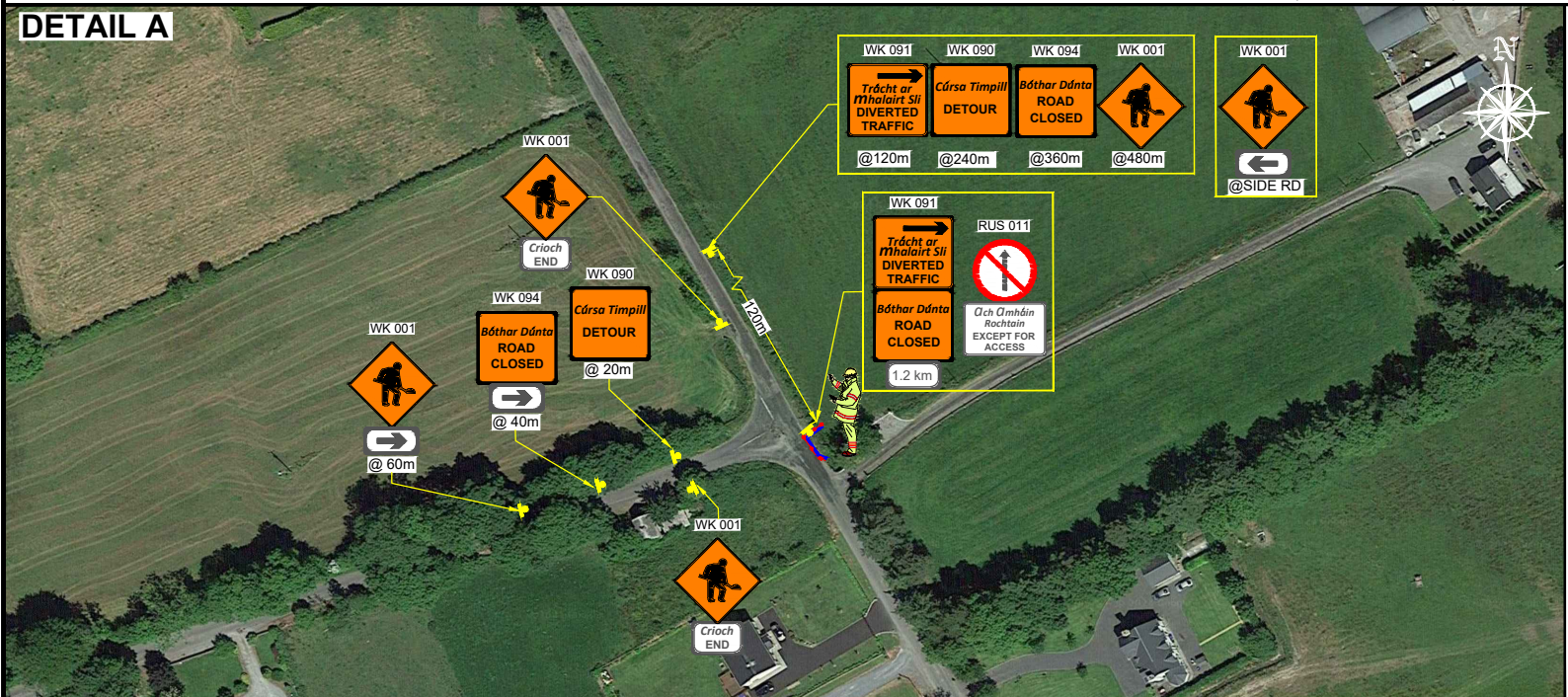
Notice is hereby given that Galway County Council has made an order closing the L-3117 between the junction with the L-7148 (in the townland of Laghtonora) to the junction with the L-3116 (in the townland of Temple) from 10:00 a.m. on Tuesday 08/10/2024 to 5:00 p.m. on Friday 06/12/2024 to carry out rehabilitation works to Cormacuagh (Clogh) Bridge.

Alternative Routes

Traffic from the north, turn right at the Cormacuagh Cross Roads (signposted Newcastle Church) onto the L-3112/ L-3111 taking this road for approximately 7km turning left onto the L-7152 and continuing on this road for approximately 7km through Attymon turning left onto the L-3116 and continuing straight along this road for approximately 2.5km which will bring you back to the junction with the L-3117.

Traffic from the south, follow the L-3116 right taking this road for approximately 5km (past Pádraig Pearses GAA pitch) turning left onto the L-3209 taking this road for approximately 4km into Colmanstown turning left onto the L-7148 and taking this road for approximately 3km which will bring you back onto the L-3117.

CORMACUAGH BRIDGE, CLOGH, CO. GALWAY - ROAD CLOSURE TM LAYOUT



FOR DIVERSION ROUTES SEE
TMP JC 6637-00-02

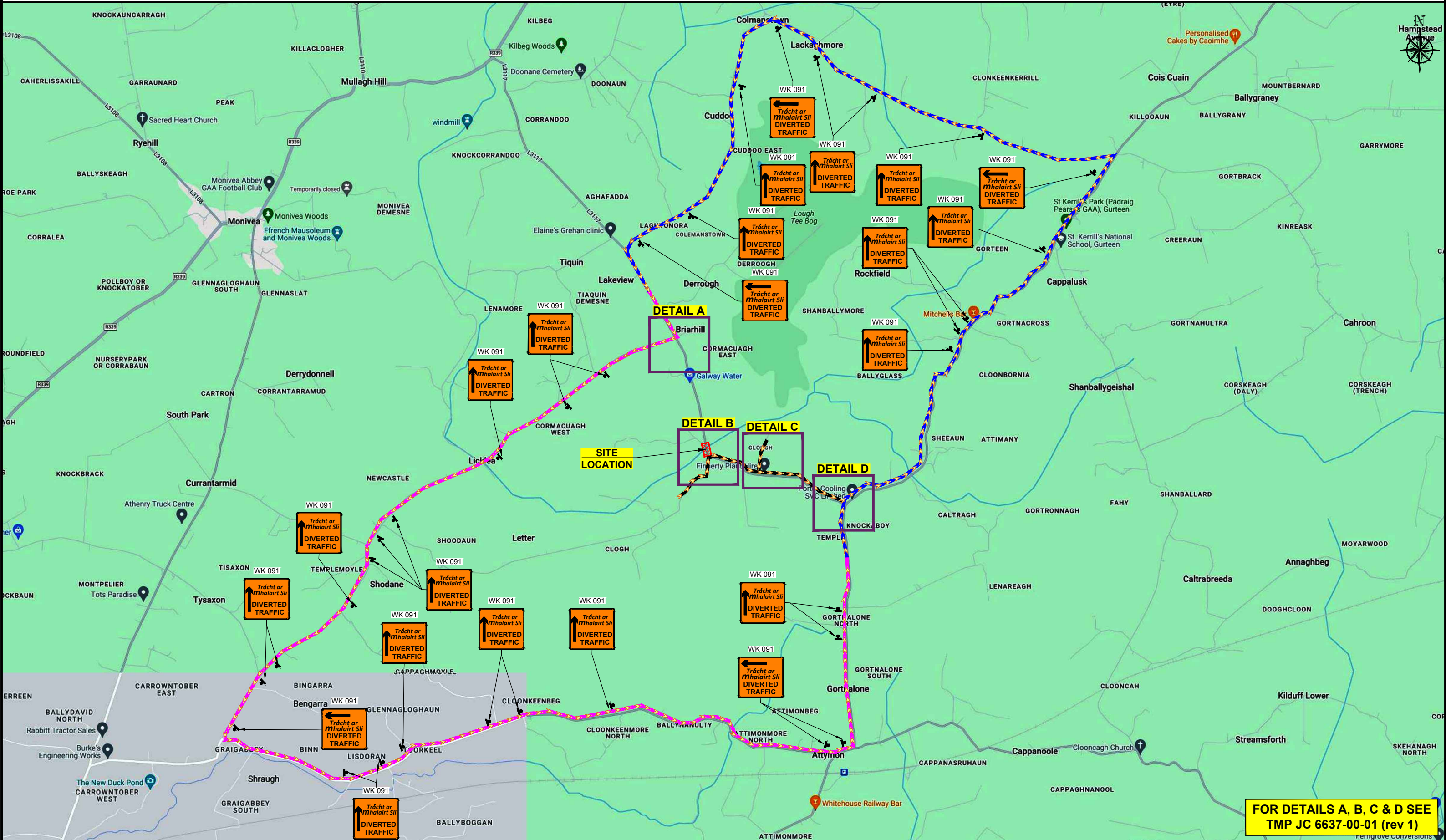
DESIGN PARAMETERS				SAFETY ZONE			TEMPORARY SIGNS			CONE SPACING AND SIZE			RATE OF TAPER		LAMP SPACING		TRAFFIC MANAGEMENT SYSTEM			LEGEND		GARY KEVILLE TRAFFIC MANAGEMENT LTD.		CLIENT: KENNY CIVILS & PLANT LTD.																					
Road Lvl(Sub)	Roadworks Type	Speed Limit (km/h)	Min. Lane Width (m)	Longitudinal (m)	Lateral (m)	Set Back (m)	Distance (m)	Number	Min. Size (mm)	Sign Visibility (m)	Longitudinal (m)	At Tapers (m)	Min. Height (mm)	Taper at H/S (m)	Taper at Lane (m)	At Tapers (m)	Longitudinal (m)	Method	Coned Area Length (m)	Max. Traffic Flow (veh/h)	TRAFFIC CONES	SCALE	PROJECT TITLE: CORMACUAGH BRIDGE, CLOGH, CO. GALWAY																						
2 (i)	A	80	3.00	45	1.2	-	120	4	600	90	12	3	750	1 in 40	1 in 40	6	24	Road Closure	n/a	n/a	•••••	NTS	ROSEMOUNT BUSINESS PARK, DUBLIN 11, CO. DUBLIN, IRELAND																						
																						•	DATE: 17-07-2024	STAGE: CONSTRUCTION		DWG. No.: JC 6637-00-01		REV: 1																	
																						—	APPROVED: SS																						
																						—	DESIGNED: BJ																						
																						—	DRAWN: BJ																						
																						—	VERIFIED: SS																						
																						—	APPROVED: SS																						
																						—	Rev. No.: 1	Revision Details		Rev. Date: 29-07-2024		Designed: BJ		Drawn: BJ		Verified: SS		Approved: SS											
																						—	Added details C & D																						

NOTES:

- ALL INFORMATION CONTAINED IN THIS DRAWING SHOULD BE CHECKED AND VERIFIED BY CONTRACTOR PRIOR TO ANY STAGE OF CONSTRUCTION.
- ALL WORKS ARE TO BE CARRIED OUT IN ACCORDANCE WITH LOCAL AUTHORITY REQUIREMENTS AND ARE TO BE INCLUDED IN THE SITE-SPECIFIC SAFETY & HEALTH PLAN.
- CONTRACTOR TO CARRY OUT A SITE RISK ASSESSMENT PRIOR TO THE INSTALLATION OF ANY TRAFFIC MANAGEMENT PLAN TO ENSURE THAT CONDITIONS REFLECT THOSE CONSIDERED FOR DESIGN POST SUBMISSION.
- CONTRACTOR SHALL BE RESPONSIBLE FOR THE PROVISION OF RAMP ACCESS AT ANY CHANGE IN ROAD SURFACE LEVEL WHERE TRAFFIC RUNS ON A TEMPORARY SURFACE.
- THIS TRAFFIC MANAGEMENT PLAN MAY ONLY BE IMPLEMENTED BY A TTOS WHO MUST CARRY OUT A RISK ASSESSMENT BEFORE IMPLEMENTATION. TTOS MUST BE IN POSSESSION OF CSCS CARD 'SIGNING, LIGHTNING AND GUARDING AT ROAD WORKS' CONSTRUCTION REGULATIONS 2006.
- EXACT SIGNS POSITIONS TO BE AGREED ON SITE.
- ACCESS TO BE MAINTAINED TO ALL DWELLINGS / BUSINESSES AT ALL TIMES.
- SITE INSPECTIONS AND MAINTENANCE OF THE TRAFFIC MANAGEMENT LAYOUT IS TO BE CONDUCTED ON A DAILY BASIS TO ENSURE THE SAFETY AND INTEGRITY OF THE DESIGN.
- ALL TEMPORARY FOOTWAYS MUST HAVE A GOOD QUALITY, EVEN SURFACE AND BE MAINTAINED FREE FROM OBSTRUCTION.
- WHERE A SITE-SPECIFIC SURVEY HAS NOT BEEN CARRIED OUT BY GKTM LTD., THE COMPANY DOES NOT ACCEPT THE APPOINTMENT AS TM DESIGNER FOR THE PROJECT. ANY TTMLD PRODUCED BY GKTM LTD. IS FOR THE PRELIMINARY SAFETY PLAN ONLY AND MUST BE FURTHER DEVELOPED BY A TM DESIGNER APPOINTED BY THE MAIN CONTRACTOR FOR THE CONSTRUCTION PHASE.
- PEDESTRIANS TO BE PROTECTED FROM WORKS AREA BY PEDESTRIAN BARRIER SYSTEM.
- TM OPERATIVES TO MAINTAIN CLOSURE. MARSHAL PEDESTRIANS AND INFORM DRIVERS ABOUT DIVERSION ROUTES.
- DUE TO ROAD GEOMETRY, RISK ASSESSMENT AND THAT MORE THAN 80% OF TRAFFIC IS TRAVELING WITH THE SPEED OF 50km/h OR LESS BEFORE GETTING TO THE STOPYIELD, THE DISTANCE BETWEEN ADVANCE SIGNS HAS BEEN REDUCED FROM 120m TO 20m AND NUMBER OF SIGNS TO 3 AT SIDE ROADS AS PER DESIGN PARAMETERS LV1 (iv).

COPYRIGHT NOTES:
THIS DRAWING IS THE PROPERTY OF GARY KEVILLE TRAFFIC MANAGEMENT. THE DESIGN INFORMATION CONTAINED HEREIN IS STRICTLY CONFIDENTIAL. THIS DOCUMENT IS NOT TO BE USED, REPRODUCED, DISCLOSED OR CIRCULATED IN WHOLE OR IN PART WITHOUT THE PRIOR WRITTEN CONSENT IN EACH INSTANCE OF GARY KEVILLE TRAFFIC MANAGEMENT. © GKTM 2024

CORMACUAGH BRIDGE, CLOGH, CO. GALWAY - DIVERSION ROUTES TM LAYOUT



FOR DETAILS A, B, C & D SEE
TMP JC 6637-00-01 (rev 1)

DESIGN PARAMETERS				SAFETY ZONE			TEMPORARY SIGNS				CONE SPACING AND SIZE				RATE OF TAPER		LAMP SPACING		TRAFFIC MANAGEMENT SYSTEM		
Road Lvl(Sub)	Roadworks Type	Speed Limit (km/h)	Min. Lane Width (m)	Longitudinal (m)	Lateral (m)	Set Back (m)	Distance (m)	Number	Min. Size (mm)	Sign Visibility (m)	Longitudinal (m)	At Tapers (m)	Min. Height (m)	Taper at H/S (m)	Taper at Lane (m)	At Tapers (m)	Longitudinal (m)	Method	Coned Area Length (m)	Max. Traffic Flow (veh/h)	
2 (i)	A	80	3.00	45	1.2	-	120	4	600	90	12	3	750	1 in 40	1 in 40	6	24	Road Closure	n/a	n/a	

LEGEND

- SIGN LOCATION
- WORKS AREA
- DIVERSION ROUTE
- DIVERSION ROUTE
- DIVERSION ROUTE

1) ALL INFORMATION CONTAINED IN THIS DRAWING SHOULD BE CHECKED AND VERIFIED BY CONTRACTOR PRIOR TO ANY STAGE OF CONSTRUCTION.
2) ALL WORKS ARE TO BE CARRIED OUT IN ACCORDANCE WITH LOCAL AUTHORITY REQUIREMENTS AND ARE TO BE INCLUDED IN THE SITE-SPECIFIC SAFETY & HEALTH PLAN.
3) CONTRACTOR TO CARRY OUT A SITE RISK ASSESSMENT PRIOR TO THE INSTALLATION OF ANY TRAFFIC MANAGEMENT PLAN TO ENSURE THAT CONDITIONS REFLECT THOSE CONSIDERED FOR DESIGN POST SUBMISSION.

4) CONTRACTOR SHALL BE RESPONSIBLE FOR THE PROVISION OF RAMP ACCESS AT ANY CHANGE IN ROAD SURFACE LEVEL WHERE TRAFFIC RUNS ON A TEMPORARY SURFACE.
5) THIS TRAFFIC MANAGEMENT PLAN MAY ONLY BE IMPLEMENTED BY A TTOS WHO MUST CARRY OUT A RISK ASSESSMENT BEFORE IMPLEMENTATION. TTOS MUST BE IN POSSESSION OF CSCS CARD 'SIGNING, LIGHTNING AND GUARDING AT ROAD WORKS' CONSTRUCTION REGULATIONS 2006.
6) EXACT SIGNS POSITIONS TO BE AGREED ON SITE.
7) ACCESS TO BE MAINTAINED TO ALL DWELLINGS / BUSINESSES AT ALL TIMES.

8) SITE INSPECTIONS AND MAINTENANCE OF THE TRAFFIC MANAGEMENT LAYOUT IS TO BE CONDUCTED ON A DAILY BASIS TO ENSURE THE SAFETY AND INTEGRITY OF THE DESIGN.
9) ALL TEMPORARY FOOTWAYS MUST HAVE A GOOD QUALITY, EVEN SURFACE AND BE MAINTAINED FREE FROM OBSTRUCTION.
10) WHERE A SITE-SPECIFIC SURVEY HAS NOT BEEN CARRIED OUT BY GKTM LTD., THE COMPANY DOES NOT ACCEPT THE APPOINTMENT AS TM DESIGNER FOR THE PROJECT. ANY TTMDL PRODUCED BY GKTM LTD. IS FOR THE PRELIMINARY SAFETY PLAN ONLY AND MUST BE FURTHER DEVELOPED BY A TM DESIGNER APPOINTED BY THE MAIN CONTRACTOR FOR THE CONSTRUCTION PHASE.

10) PEDESTRIANS TO BE PROTECTED FROM WORKS AREA BY PEDESTRIAN BARRIER SYSTEM.
11) TM OPERATIVES TO MAINTAIN CLOSURE. MARSHAL PEDESTRIANS AND INFORM DRIVERS ABOUT DIVERSION ROUTES.
12) DUE TO ROAD GEOMETRY, RISK ASSESSMENT AND THAT MORE THAN 80% OF TRAFFIC IS TRAVELING WITH THE SPEED OF 50km/h OR LESS BEFORE GETTING TO THE STOP/YIELD, THE DISTANCE BETWEEN ADVANCE SIGNS HAS BEEN REDUCED FROM 120m TO 20m AND NUMBER OF SIGNS TO 3 AT SIDE ROADS AS PER DESIGN PARAMETERS LV1 (iv).

GARY KEVILLE TRAFFIC MANAGEMENT LTD.
Rosemount Business Park, Dublin 11, Co. Dublin, Ireland
Tel: (+3531) 667 4322; Email: info@gktm.ie; Visit us at: www.gktm.ie

GKTM

DESIGNED: BJ	SCALE: NTS	PROJECT TITLE: CORMACUAGH BRIDGE, CLOGH, CO. GALWAY
DRAWN: BJ	DATE: 29-07-2024	DRAWING NAME: DIVERSION ROUTES TM LAYOUT
VERIFIED: SS	STAGE: CONSTRUCTION	DWG. No.: JC 6637-00-02
APPROVED: SS	Rev. No.: Revision Details	Rev. Date: Designed: Drawn: Verified: Approved:

CLIENT: **KENNY CIVILS & PLANT LTD.**

Rev. No.: Revision Details

Rev. Date: Designed: Drawn: Verified: Approved:

Copyright Notes: THIS DRAWING IS THE PROPERTY OF GARY KEVILLE TRAFFIC MANAGEMENT. THE DESIGN INFORMATION CONTAINED HEREIN IS STRICTLY CONFIDENTIAL. THIS DOCUMENT IS NOT TO BE USED, REPRODUCED, DISCLOSED OR CIRCULATED IN WHOLE OR IN PART WITHOUT THE PRIOR WRITTEN CONSENT IN EACH INSTANCE OF GARY KEVILLE TRAFFIC MANAGEMENT. © GKTM 2024